

# **WORKSHOP LAYOUTS – Presentation by Andy Hatting to Grahamstown Woodworkers on Tuesday 11 Feb 2014**

## **GENERAL POINTS TO CONSIDER IN LAYING OUT A WORKSHOP**

What type of woodworker are you?

Dust extraction a must in all workshops

Ample lighting

Ample plug points (plug points suspended from ceiling work very well – no tripping over wires)

Most well laid-out workshops have ample work benches and work space

Most workshops should have at least two exits

Wheels desirable on most machines, especially if you have a small workshop

Combination tools are ok if you have a small workshop

Melamine top for glue-up bench

Try and protect clamps from glue spillage – discolouration of tools and wood projects

Noise factor a big consideration when designing or equipping workshops

Safety a major concern – goggles and hearing & dust masks

Be careful of cluttering workshop floor to prevent accidents etc...

Solar power or light ducts can aid for better lighting

Extension tables essential for a number of tools

Brakes on most wheeled tools – sample

## **BEST TOOLS TO START WITH:(DEPENDING ON WHAT YOUR INTERESTS ARE)**

BANDSAW

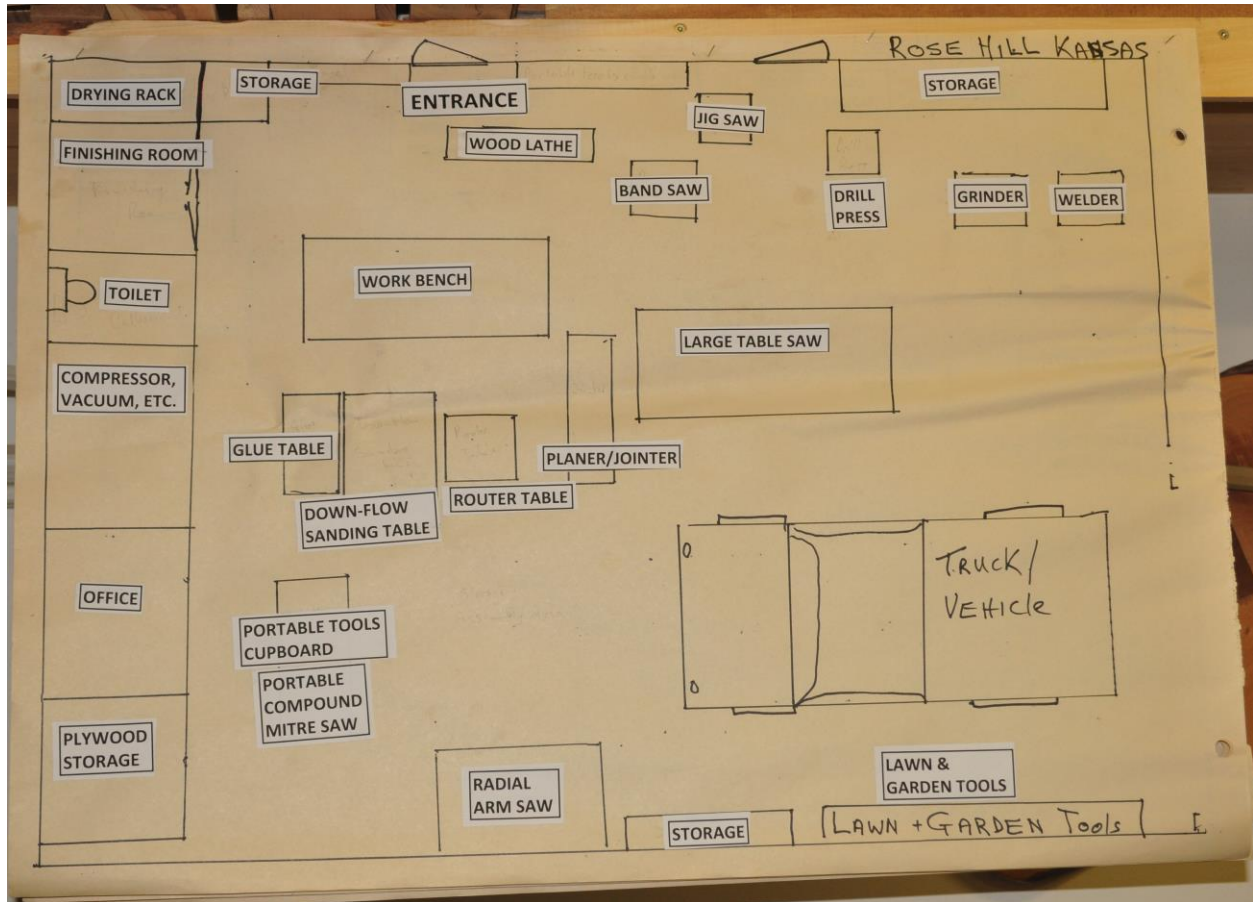
ROUTER

TABLE SAW

THICKNESSER

SMALL TOOLS ARE A GIVEN (DRILLS, BISCUIT JOINTERS PALM SANDERS, BELT SANDERS ETC....)

## SOME EXAMPLES AND COMMENTS ON VARIOUS LAYOUTS



### WORKSHOP 1(ROSE HILL KANSAS)

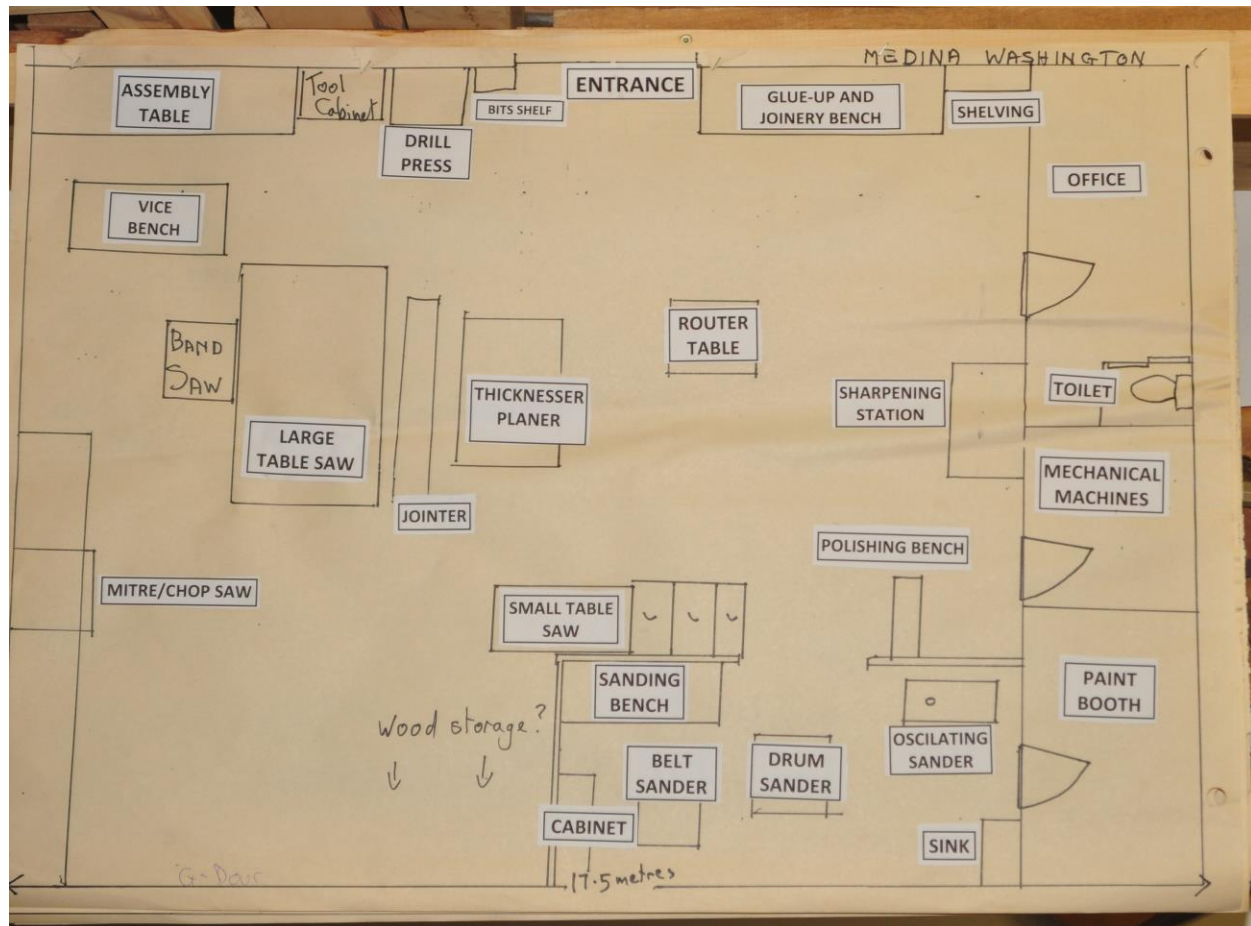
DOUBLES AS A GARAGE

FINISHING ROOM FOR TOXIC FUMES AND TO FACILITATE BETTER AIR EXTRACTION

MOST MACHINES ARE PORTABLE ON WHEELS

TOILET FACILITIES

WELDER IN WORKSHOP – NOT GOOD



## WORKSHOP 2 (Medina, Washington)

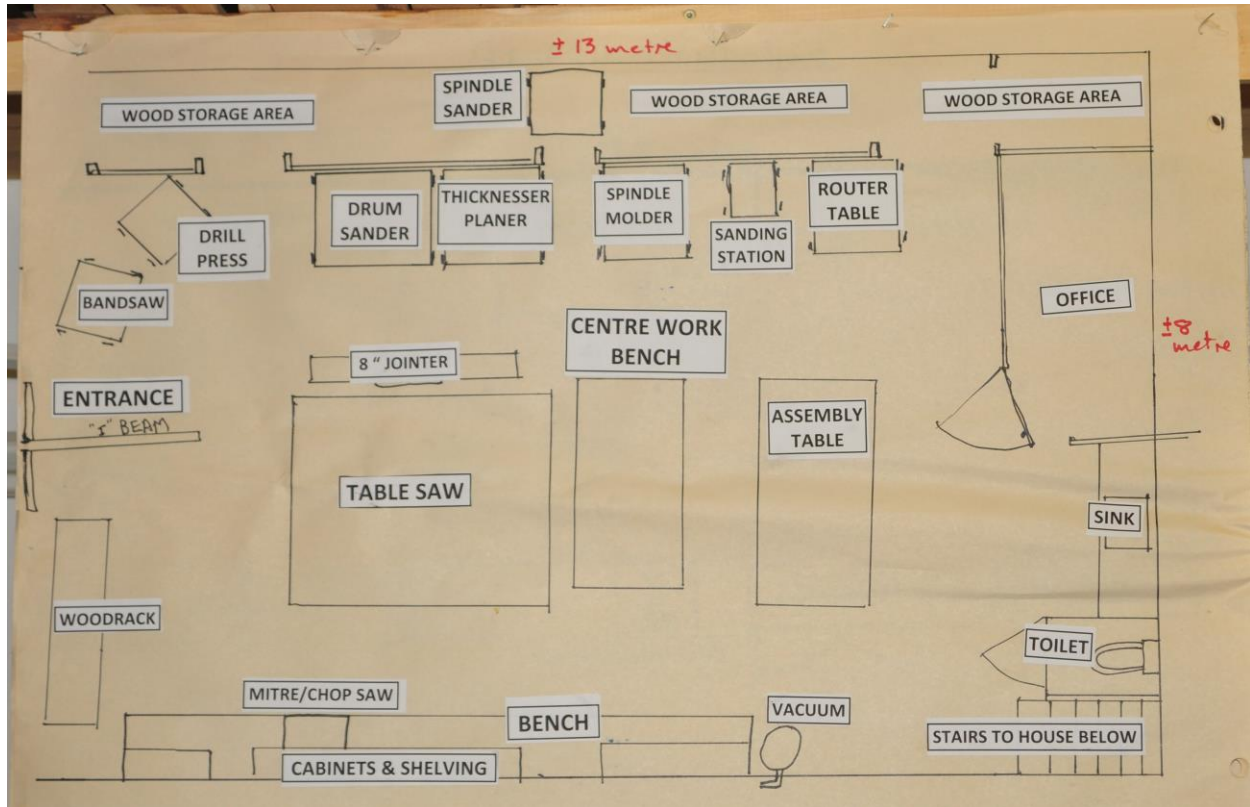
HAS GARAGE DOOR ON BOTTOM LEFT, TO ENABLE WORKING WITH LONGER PIECES OF LUMBER

DIFFERENT BENCHES SERVE DIFFERENT PURPOSES

SEPARATE SANDING ROOM

SEPARATE MECHANICAL ROOM TO DAMPEN NOISE, ETC.

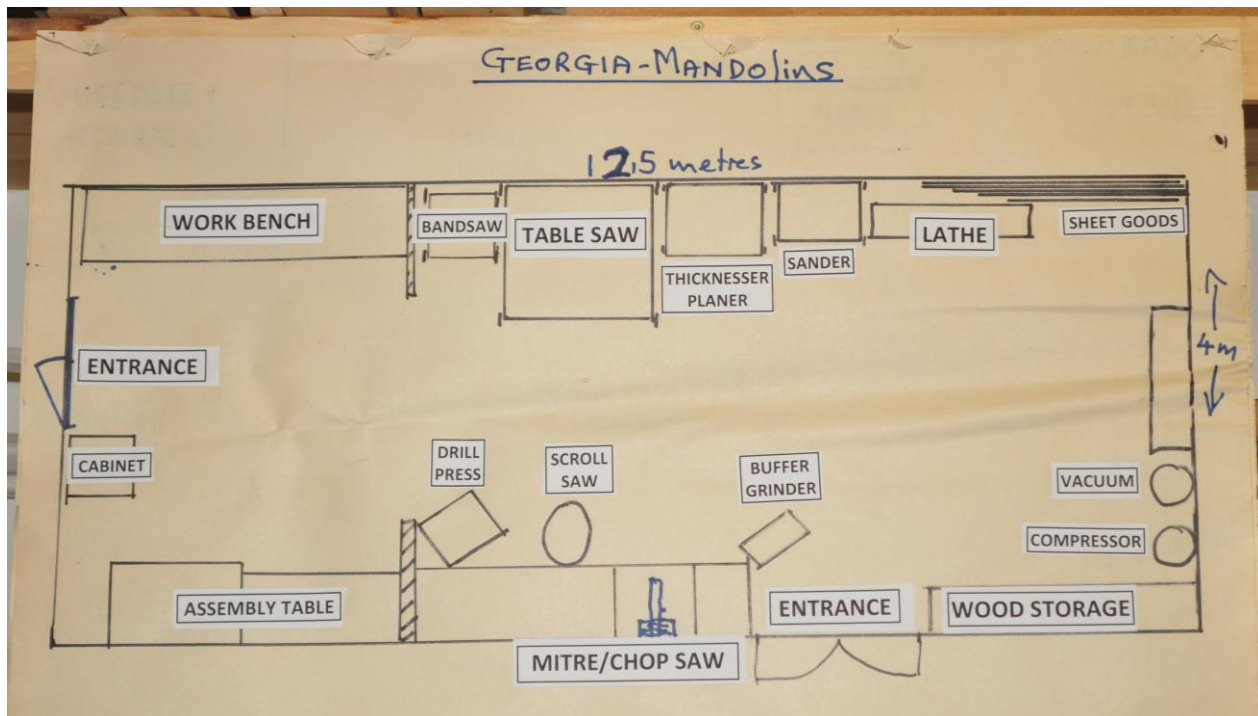
PAINT BOOTH



### WORKSHOP 3 (Loft or Attic Workshop)

"I" BEAM TO HOIST HEAVY MATERIALS AND MACHINERY

TOILET & OFFICE AREA



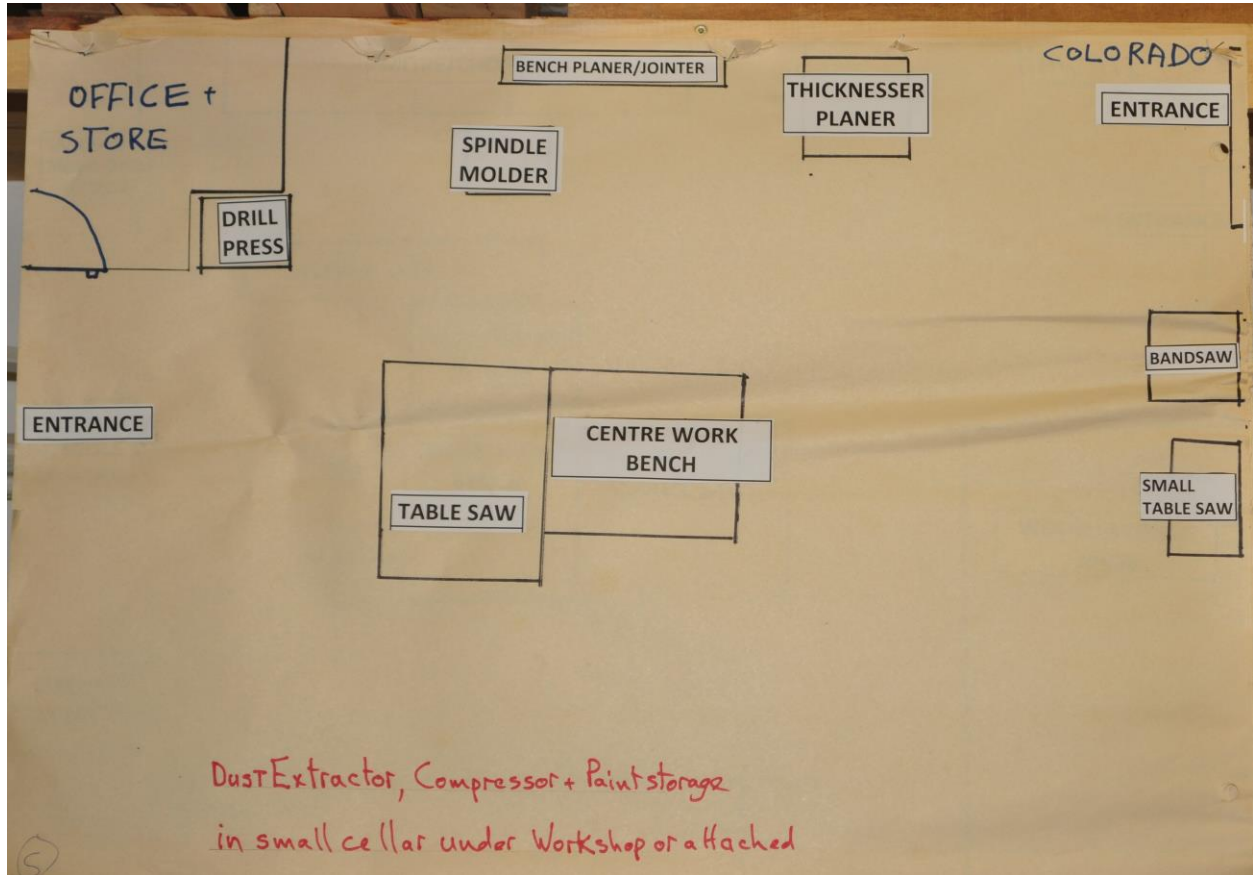
## WORKSHOP 4 (Georgia)

MOST HEAVY TOOLS ON WHEELS

LONG NARROW ROOM, SO WHEELING MACHINERY AROUND ALL THE TIME

SEPARATING WALL BETWEEN MITRE SAW AND ASSEMBLY TABLE

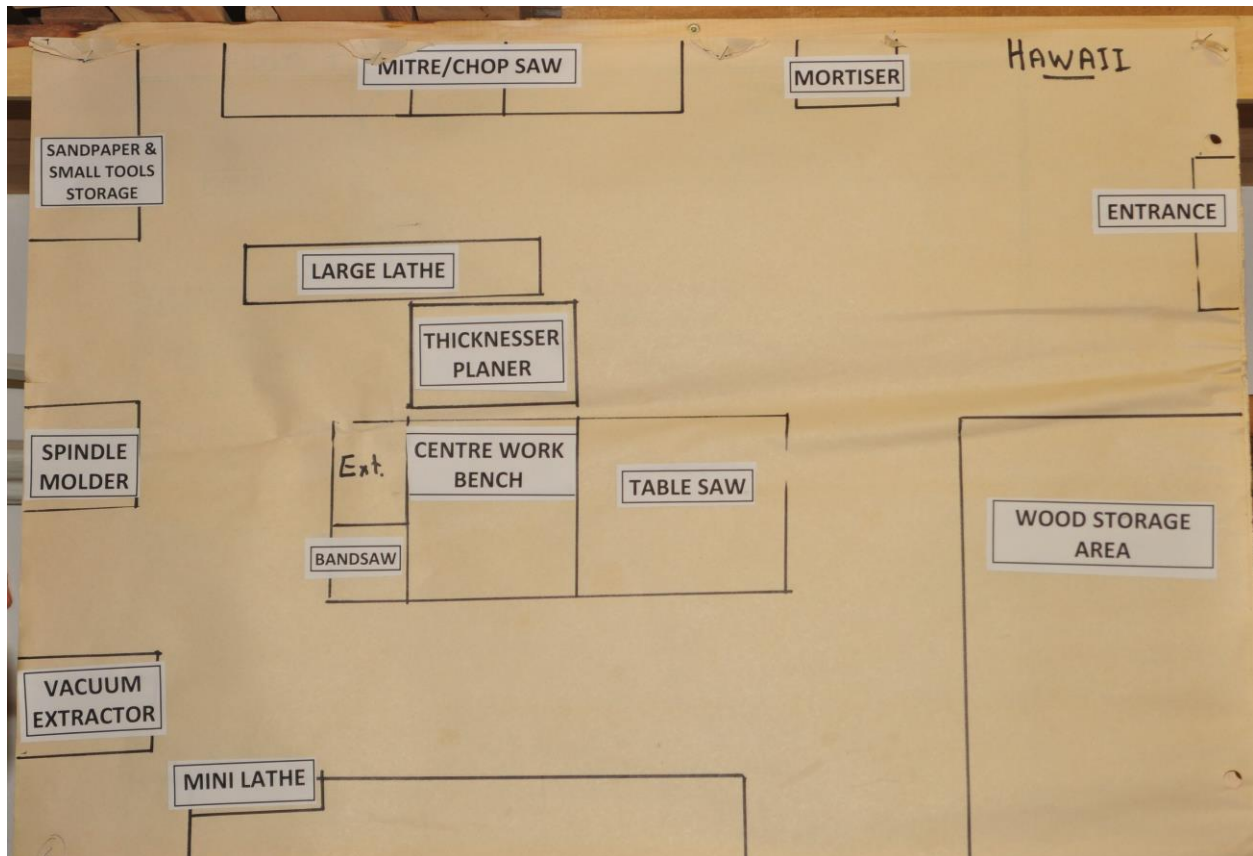
ONLY ONE ENTRANCE



## WORKSHOP 5 (Colorado)

AMPLE ROOM FOR ALL SORTS OF OPERATIONS

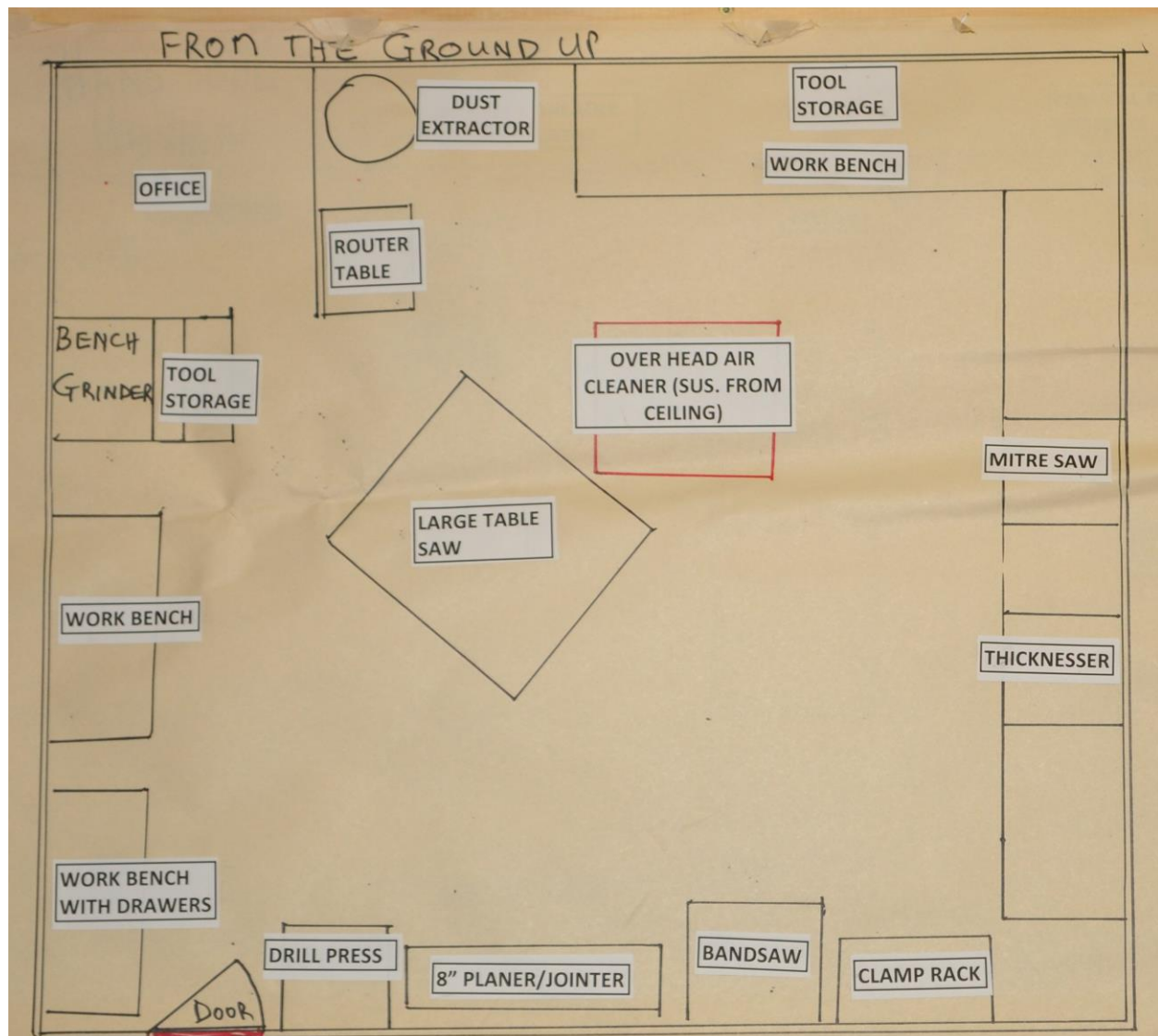




## WORKSHOP 6 (Hawaii)

PRIMARILY A TURNER

MINI LATHE ON EDGE OF BENCH

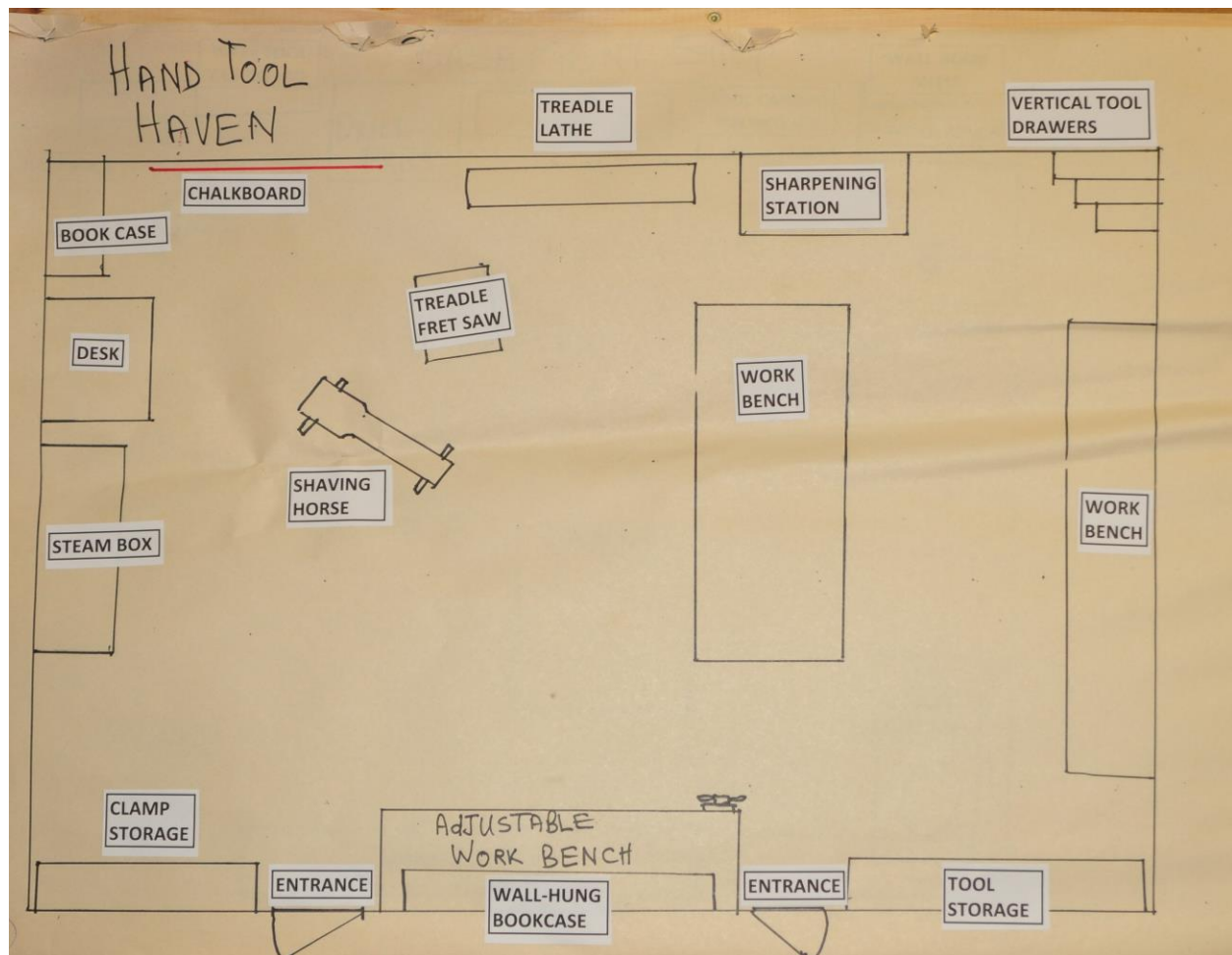


## WORKSHOP 7 (Ground up)

OVERHEAD AIRCLEANER

AMPLE WORK BENCHES ALL OVER WORK SHOP

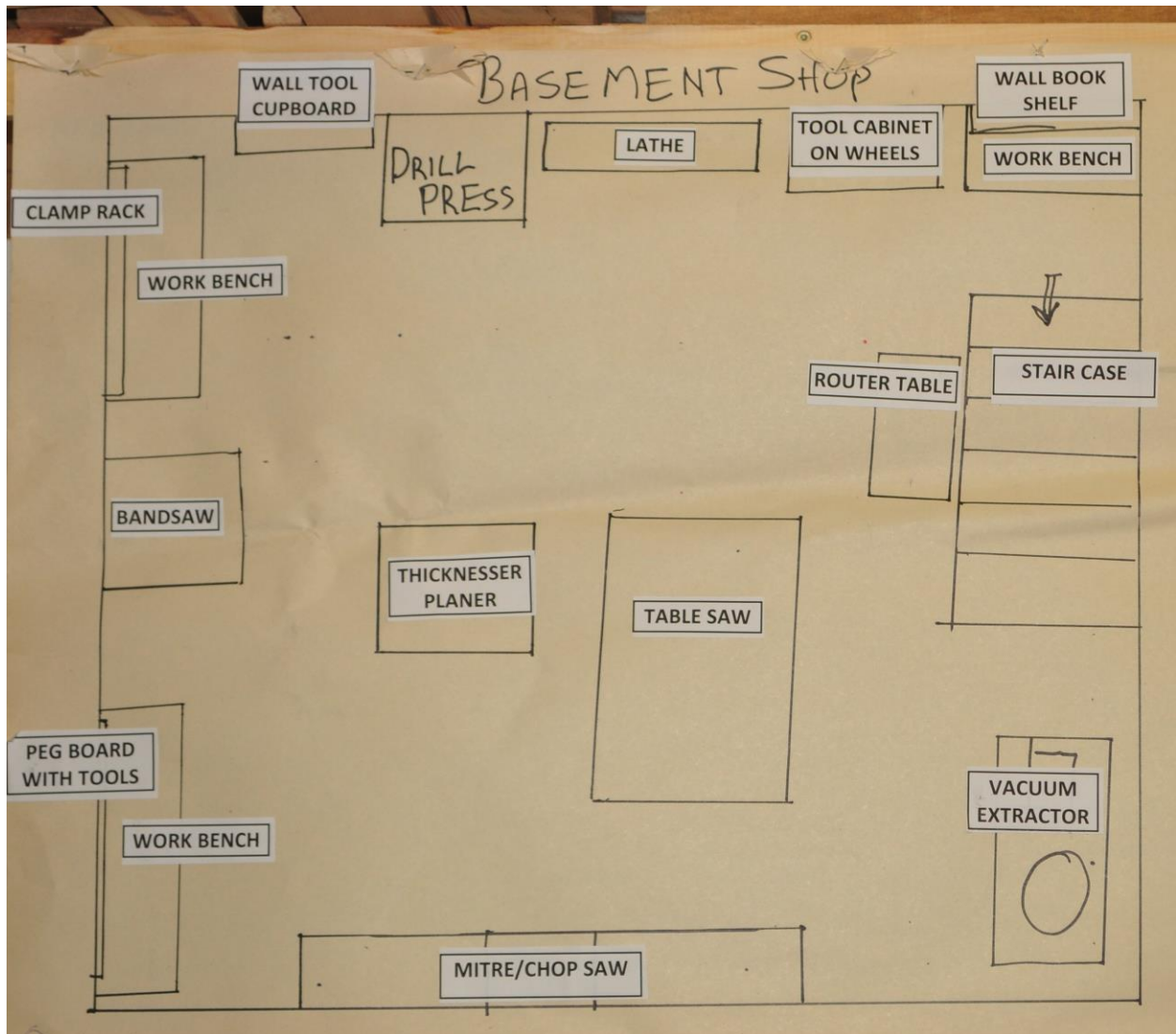




## WORKSHOP 8 (Hand Tool Haven)

MAINLY HAND TOOLS USED IN THIS WORKSHOP – MORE TRADITIONAL – HENCE THE BOOK CASES

VERTICAL TOOL DRAWERS A GREAT SPACE SAVER



## WORKSHOP 9 (Basement)

HAS TO CONTEND WITH DAMPNES – DISCUSSION ON HOW TO KEEP DAMPNES OUT



**WORKSHOP 10** (A view of Andy's new workshop – where did all the sawdust go?)