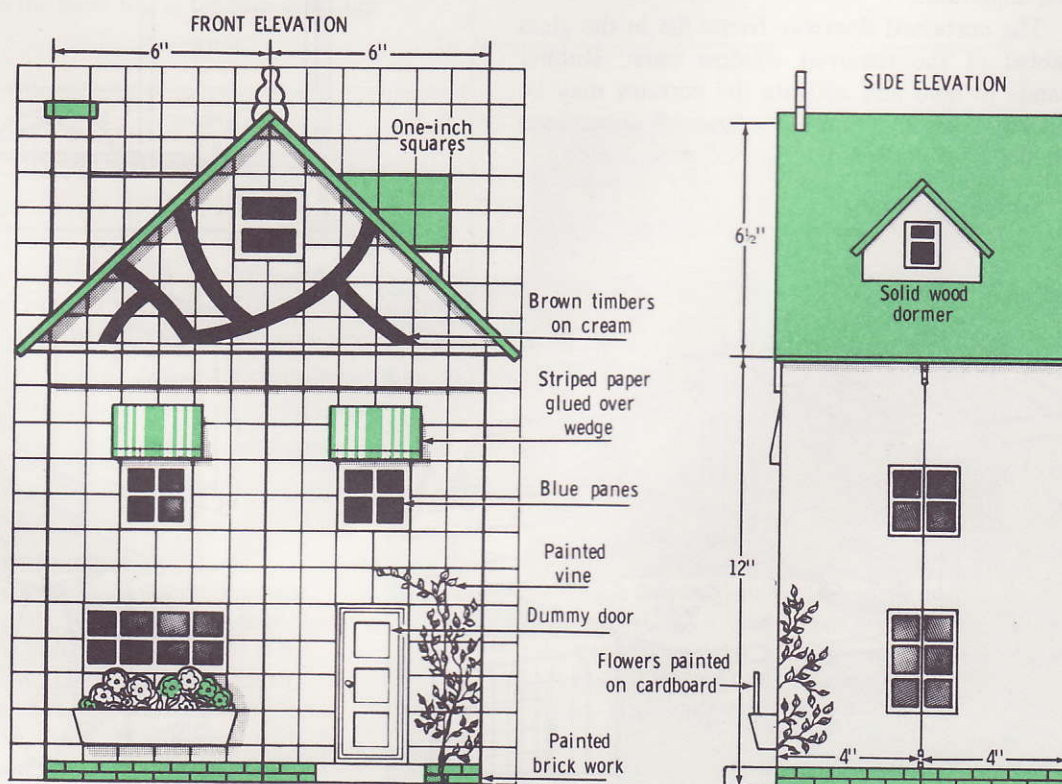


Folding dollhouse

BY HI SIBLEY

This gabled dollhouse, constructed from wood, offers privacy
for young housekeepers with valuables to hide



■ **YOUNG HOMEMAKERS** who prize their privacy will welcome a dollhouse that keeps snoopers from tampering with the rooms, once the hinged side sections are folded under the overhanging gable. There's even a secret attic where summer furniture may be stored. When closed, the dollhouse occupies only 8 x 12 in. of space.

The best construction material—for both exposed and nailed edges—is 1/4-in. pine, but you can substitute plywood. Apply glue to all butting surfaces during assembly, and attach the wings with four small brass hinges. Chimney, dormer and awnings are glued-on wood blocks.

In the model shown, windows and doors are dummies, with stencilled blue panes; but the ones at front and back may be cut out with a coping saw, if preferred, to permit peeking into the closed house. At least the gable window should be cut out, to provide a finger hole for tipping the triangle forward so it can be lifted out of its groove. Enlarge the graph-squared pattern for the other details on the facade.

The house is scaled for the tiniest doll furniture sold in most variety stores. Or you can make furniture from wood scraps. You'll probably want to build in the kitchen counter, at least, and put a contact plastic on the floor.

See also: animal pin-ups; children's furniture; dolls; games, children's; kitchen, play; playhouses; puppet theaters; toys; tree houses.

